



SAURABH

STONE INDUSTRIES

STONE IMPEX

EXPORTS

FLEXI STONE VEENER

The background image shows a modern chair with a dark frame and a light-colored stone seat and backrest. The stone has a natural, veined pattern. The text is overlaid on the left side of the image.

Flex STONE VEENER Details:-

Flex stone is the newest natural stone cladding material. It is lightweight, flexible, and colourful with endless application possibilities. The introduction of this material satisfies the need for an adaptable and weather-resistant stone decorating material for indoor and outdoor use. The revolutionary technology behind this material allows it to be easily adhered to any standard construction surface.

The individual sheets are all naturally different from each other. Flex stone is a natural stone layer attached to a fiberglass/polyester resin substrate which acts as the back of the material to provide flexibility and strength. Geologically, two sheets cannot be identical, and as such Flex stone maintains its beauty as a natural stone.



Slimline Stone Laminates are some of the most exciting and innovative applications of natural stone available today. Once mundane surfaces are transformed into sophisticated showcases.

Light weight. Flexible. Available in thicknesses from 2mm to 4mm (due to variations in natural stone surface). Real stone with endless applications.

Calibrated and available in a variety of sizes, Slimline Stone Laminates are extremely easy to install.

Through applications on woodwork, walls, ceilings, countertops, cabinets, etc., any space can be modified into a luxurious environment.



PRODUCT INCENTIVES :

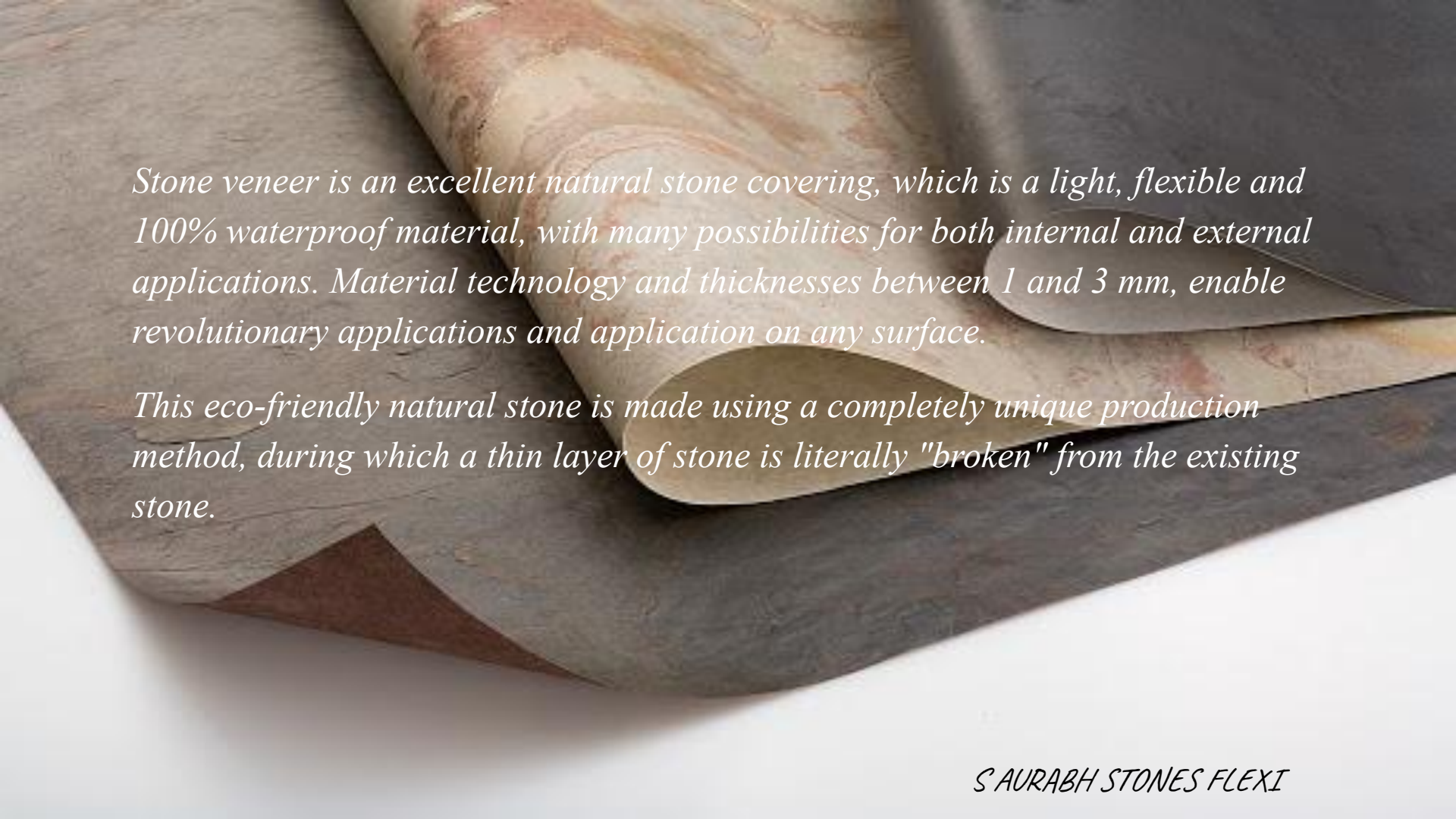
- The timeless beauty of natural stone combined with the ease of installation of laminate sheets.*
- Eco Friendly Production.*
- Thickness maximizes SQFT covered and minimizes freight costs.*
- Malleability allows for simple custom cutting. • Can install on virtually all existing surfaces, no costly extractions necessary. • Installs quickly, cutting all labour costs. • Convenient for DIY customers.*

SAURABH STONES FLEXI



*A great example is the door to which one sheet is enough.
You save time during assembly*

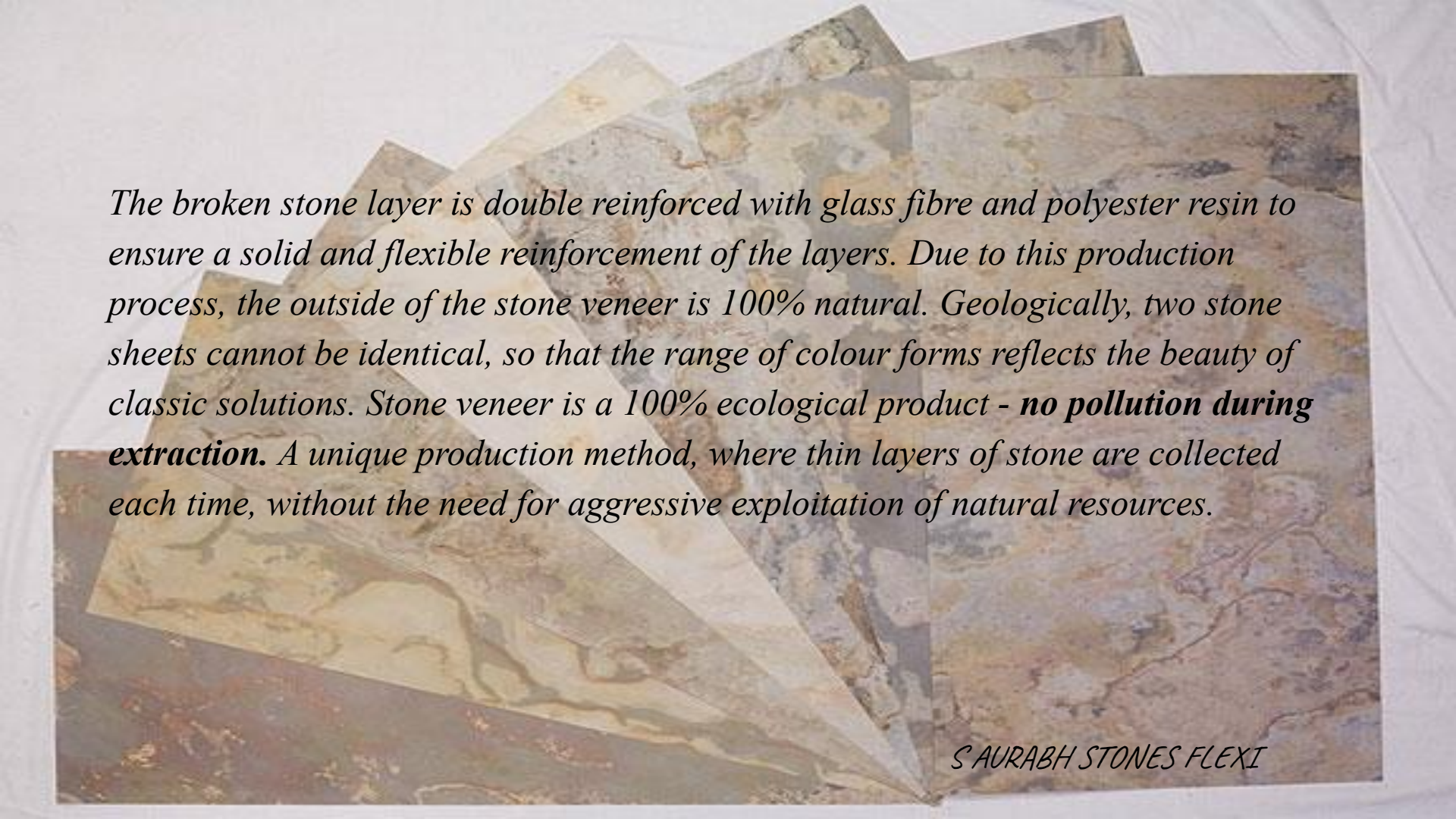
- ❖ Stone veneer 100% natural stone*
- ❖ The top layer of veneer is made of 100% natural stone. You can have beautiful quartzite, marble and sandstone in your interior and exterior.*
- ❖ Thin and light thick 1-3 mm Weight 1.5 kg / m²*
- ❖ We can use it where mounting heavy stone slabs is not easy due to the weight and weight limitations.*
- ❖ We can transport large quantities of stone veneer*
- ❖ Large sheets 122x61 cm and 244 x 122 cm*



Stone veneer is an excellent natural stone covering, which is a light, flexible and 100% waterproof material, with many possibilities for both internal and external applications. Material technology and thicknesses between 1 and 3 mm, enable revolutionary applications and application on any surface.

This eco-friendly natural stone is made using a completely unique production method, during which a thin layer of stone is literally "broken" from the existing stone.

S'AURABH STONES FLEXI



*The broken stone layer is double reinforced with glass fibre and polyester resin to ensure a solid and flexible reinforcement of the layers. Due to this production process, the outside of the stone veneer is 100% natural. Geologically, two stone sheets cannot be identical, so that the range of colour forms reflects the beauty of classic solutions. Stone veneer is a 100% ecological product - **no pollution during extraction**. A unique production method, where thin layers of stone are collected each time, without the need for aggressive exploitation of natural resources.*

S AURABH STONES FLEXI



Due to its construction and properties, stone veneer is divided into three groups: FLEX STONE, NANO STONE TRANSPARENT STONE, NANOSTONE is the thinnest and the most flexible, and this is the non-woven fabric made of cotton. Stone layer from 0.1 to 0.3 mm. definitely a very effective version is TRANSPARENT STONE. The transparent resin and fibreglass used allow the light to pierce through a thin layer of stone creating a unique effect. Such properties allow us to use this veneer, e.g. for the construction of lamps, illuminated walls or bars, or hotel reception desks.

S'AURABH STONES FLEXI



Black



Ocean



Silver Grey



Ocean Black



California Gold



S AURABH STONES FLEXI



Autumn Rustic



Indian Autumn



Tan



Silver Shine



Silver Shine Gold



Golden



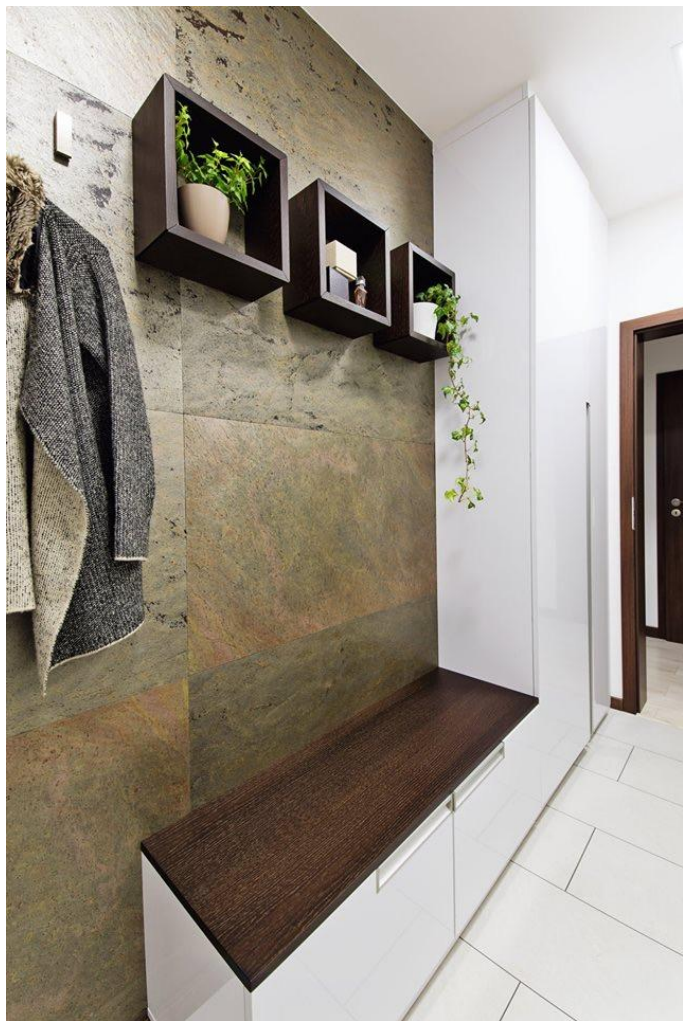
Grey



Jeera Green



Silver Galaxy



S. White



Burning Forest



Multi Pink



Rustic Wave



Terra Red



Multicolor



Shine Copper



Copper

STANDARD



DEOLI GREEN



COPPER

S'AURABH STONES FLEXI



S AURABH STONES FLEXI

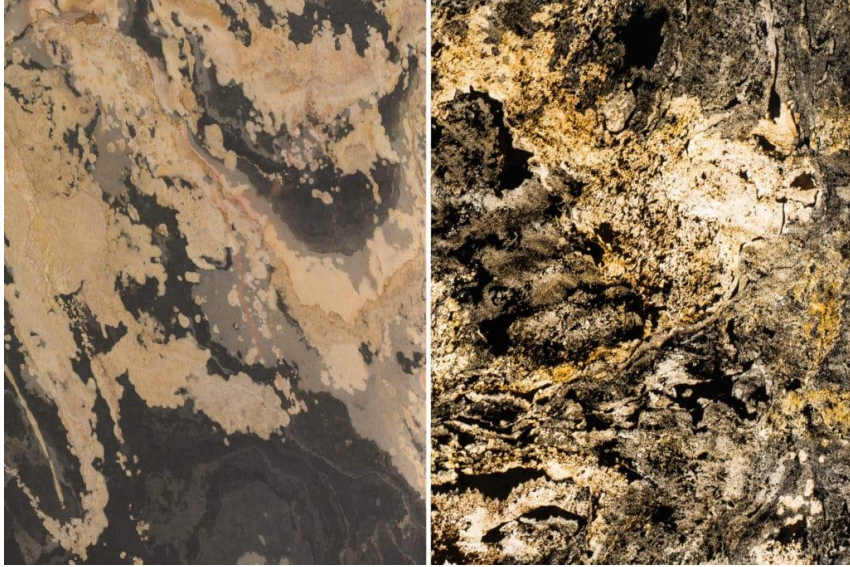


SILVER SHINE



D.RED

S AURABH STONES FLEXI

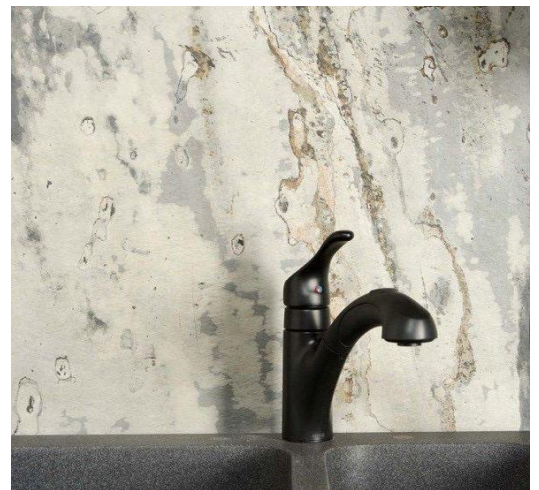
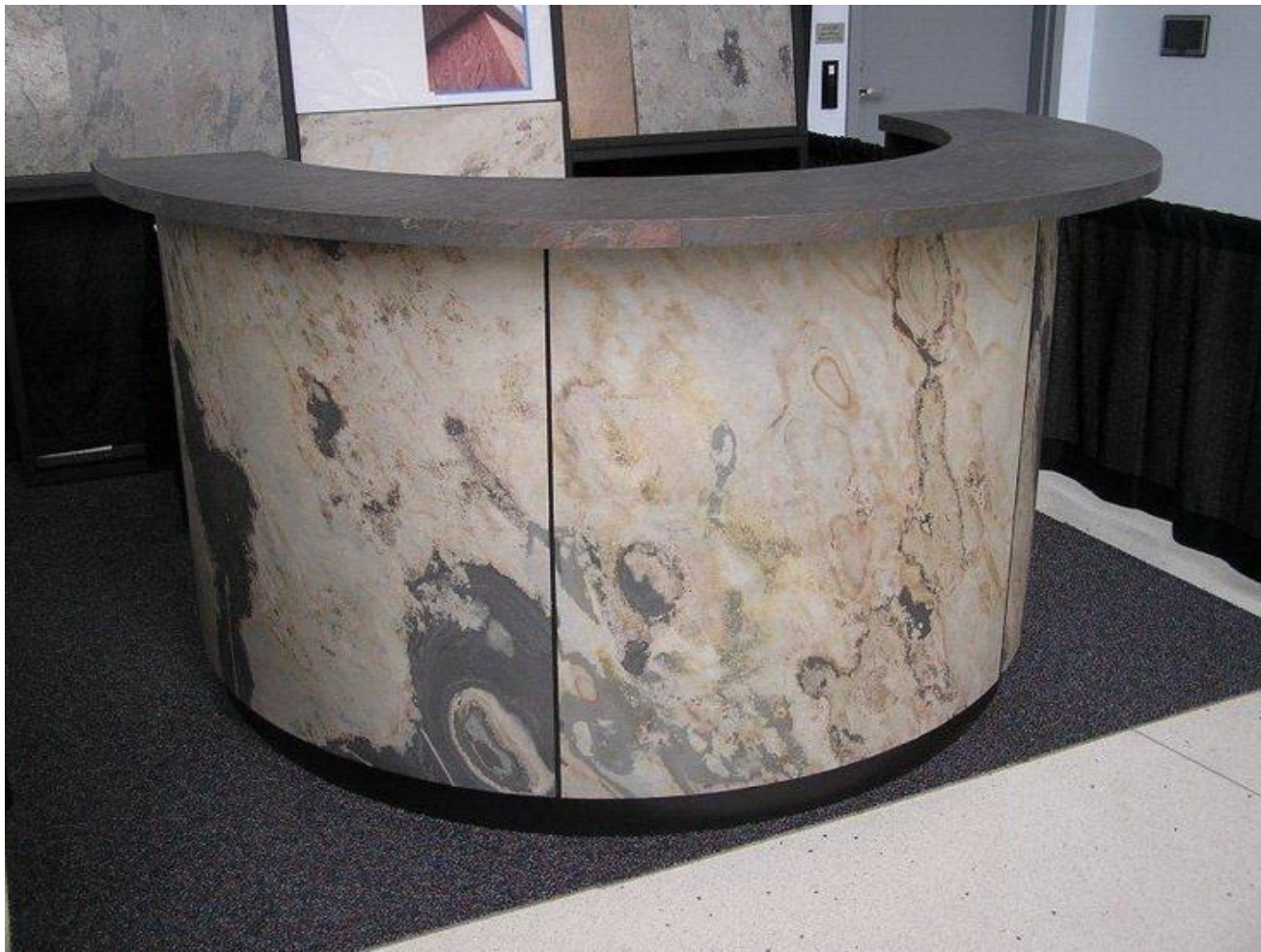


AUTUM RUSTIC

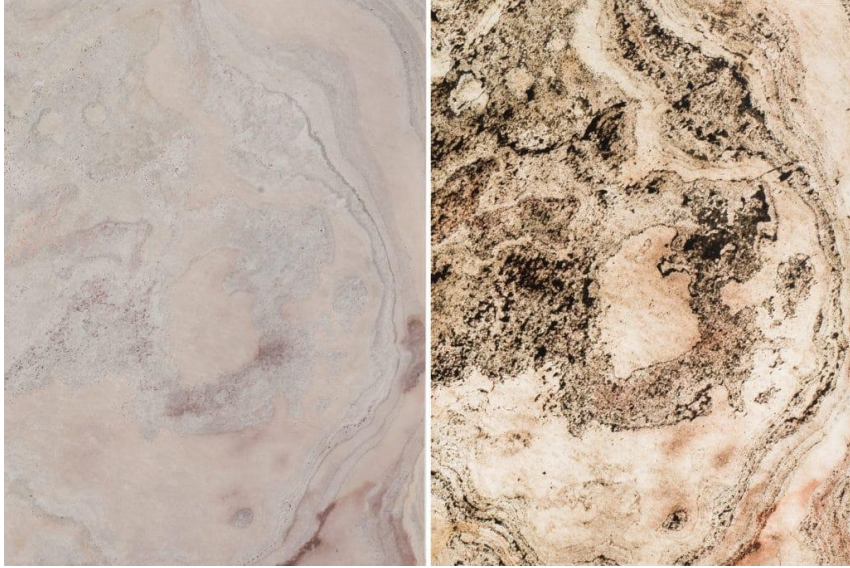


VELCANO MULTY

SAURABH STONES FLEXI



S AURABH STONES FLEXI



S. WHITE



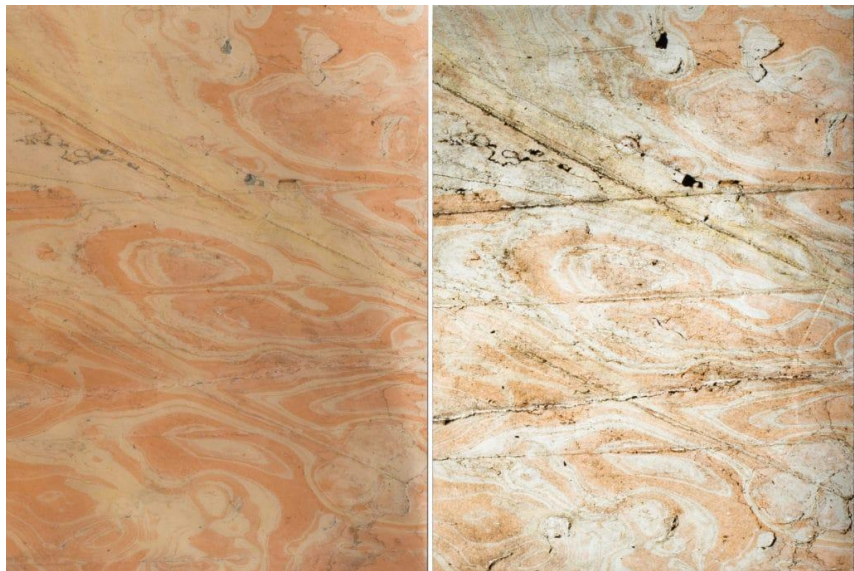
INDIAN AUTUMN

S AURABH STONES FLEXI



S.WHITE as TRANSPARENT and NON TRANSPARENT

S AURABH STONES FLEXI



SPRING RED



SOUTH BLACK

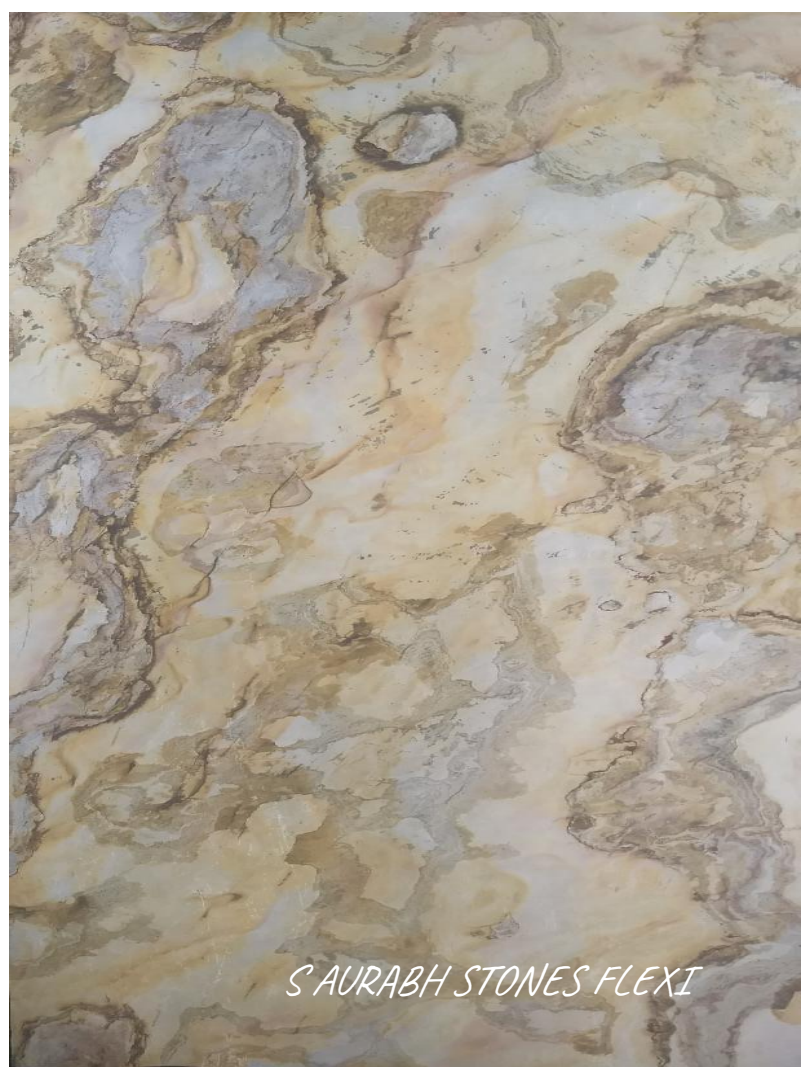
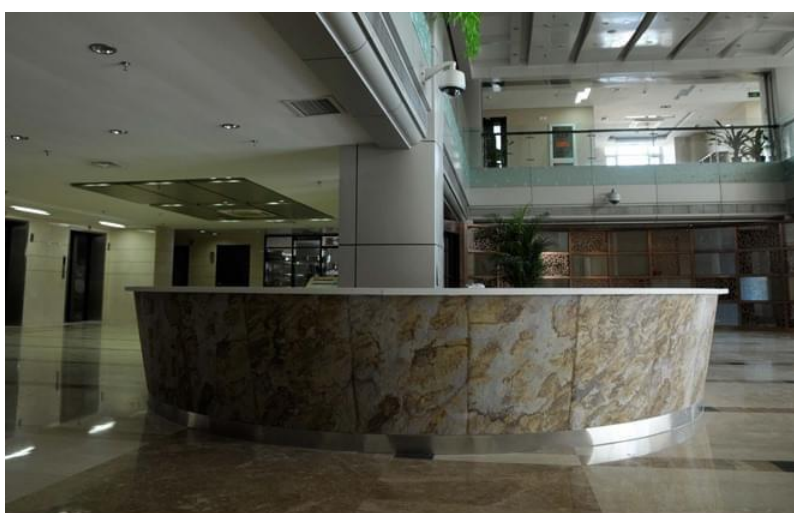
S AURABH STONES FLEXI



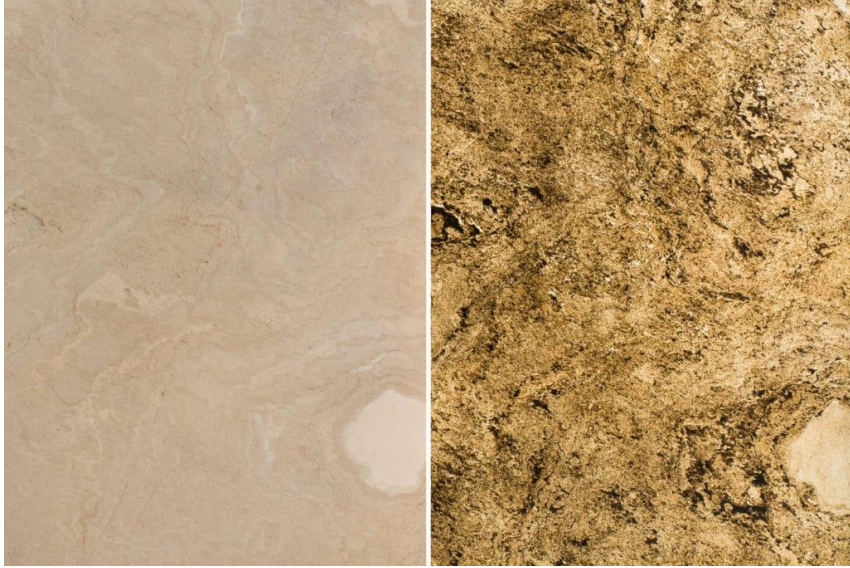
S AURABH STONES FLEXI



INDIAN AUTUM



S'AURABH STONES FLEXI



GOLDEN



ZEERA GREEN

S'AURABH STONES FLEXI





FOREST FIRE



GALAXY

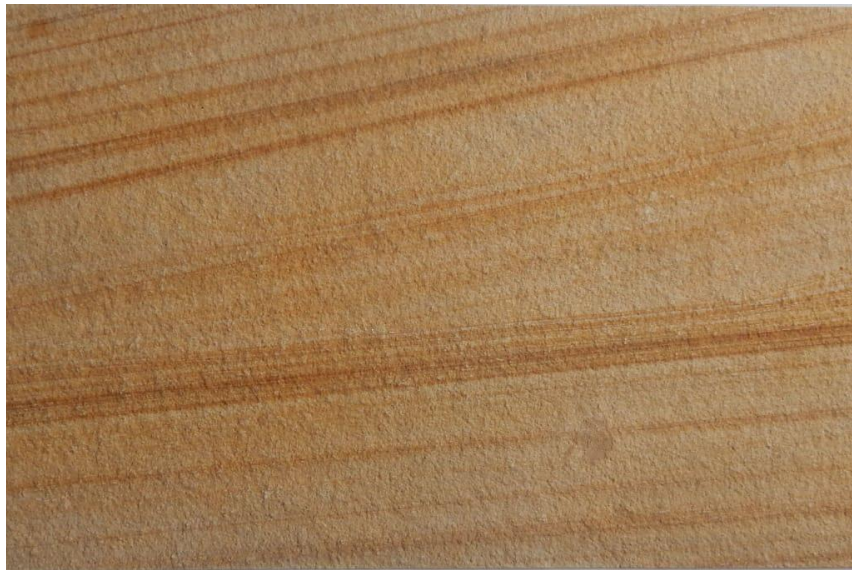


SILVER GREY



SOUTH GREY

SAND STONE

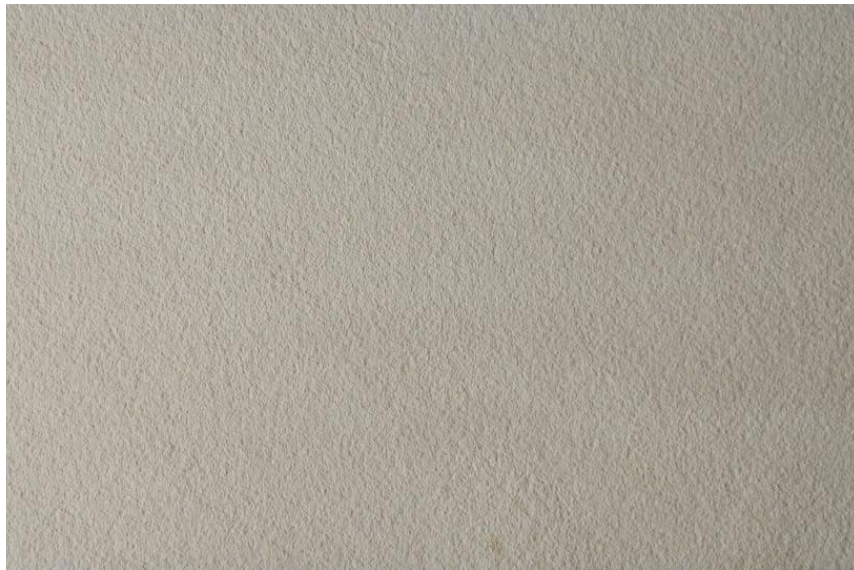


TEAK WOOD



FOREST GREEN

SAND STONE



MINT



MANSOON BLACK

SAND STONE



FOREST GREEN



CHOCCLATE RED

SAND STONE



GALAXY



RAINBOW

SOME APPLICATIONS



SAURABH STONES FLEXI



SAURABH STONES FLEXI



S AURABH STONES FLEXI



S'AURABH STONES FLEXI

In order for the stone to maintain its natural beauty and properties, proper care principles must be observed for a long time. Veneer should be regularly impregnated. Every stone is exploited by use and micro-fissures appear in its structure. The purpose of impregnation is their elimination and the creation of a protective layer on the stone surface that prevents heavy penetration of dirt to remove dirt in the gaps on the surface. In addition, it is recommended that the stone be impregnated to close the micro-gaps, which prevents the absorption of water and other liquids. Love stoned Invisible coating

S AURABH STONES FLEXI

Thanks and Regards

SAURABH *STONE INDUSTRIES*

STONE IMPEX

EXPORTS

H1-93 RIICO INDUSTRIAL AREA , DEOLI (RAJ) INDIA
00 91 9799456999, 00 91 8233663300
info@saurabhstones.com